

ALTA/ACSM Land Title Survey



8501 West Higgins Road,
Suite 280
Chicago, IL 60631-2801
773 / 399 0112
773 / 399 0170 fax

www.graef-usa.com

CLIENT:

Village of Oak Park

PROJECT TITLE:

Lake - Forest
Parking Structure

ISSUE:

PROJECT INFORMATION:

PROJECT NUMBER: 2008-3046
DATE: 3/7/2009
DRAWN BY: WJF
CHECKED BY: LAG
APPROVED BY: WJF
SCALE: 1" = 30'

SHEET TITLE:

ALTA/ACSM
Land Title Survey

SHEET NUMBER:

Legal Description

Lots 5, 6, and 7 in the Philander Smith Subdivision of Lots 8 & 9 in Kettlestring's Subdivision of lands in the southeast corner of the Northwest Quarter of Section 7, and also the Vacated Alleys lying south and east of said Lots, and also Lot 4 in C. E. Cook's Subdivision of Lot 7 in said Kettlestring's Subdivision, all in the Northwest Quarter of Section 7, Township 39 North, Range 13 East of the Third Principal Meridian, Cook County, Illinois.

Containing 45,096 square feet, more or less, or 1.035 acres, more or less.

LEGEND

- Utility pole
- Light pole
- Manhole
- Inlet
- Water valve
- Gas valve
- Fire hydrant
- Deciduous tree
- Coniferous tree
- Sign
- Guy wire
- Roof drain
- Clean out
- Rebar
- Flared end section
- Iron pipe
- Property line
- Gas line
- Electric line
- Fence
- Sanitary sewer
- Storm sewer
- Bush line
- Overhead utility line

This Plat of Survey was prepared from field survey and public records, without the benefit of a current Title Commitment

(123.45') Record Dimension
123.45' Measured Dimension

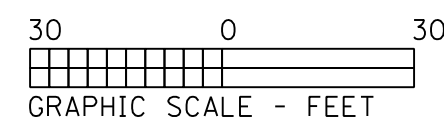
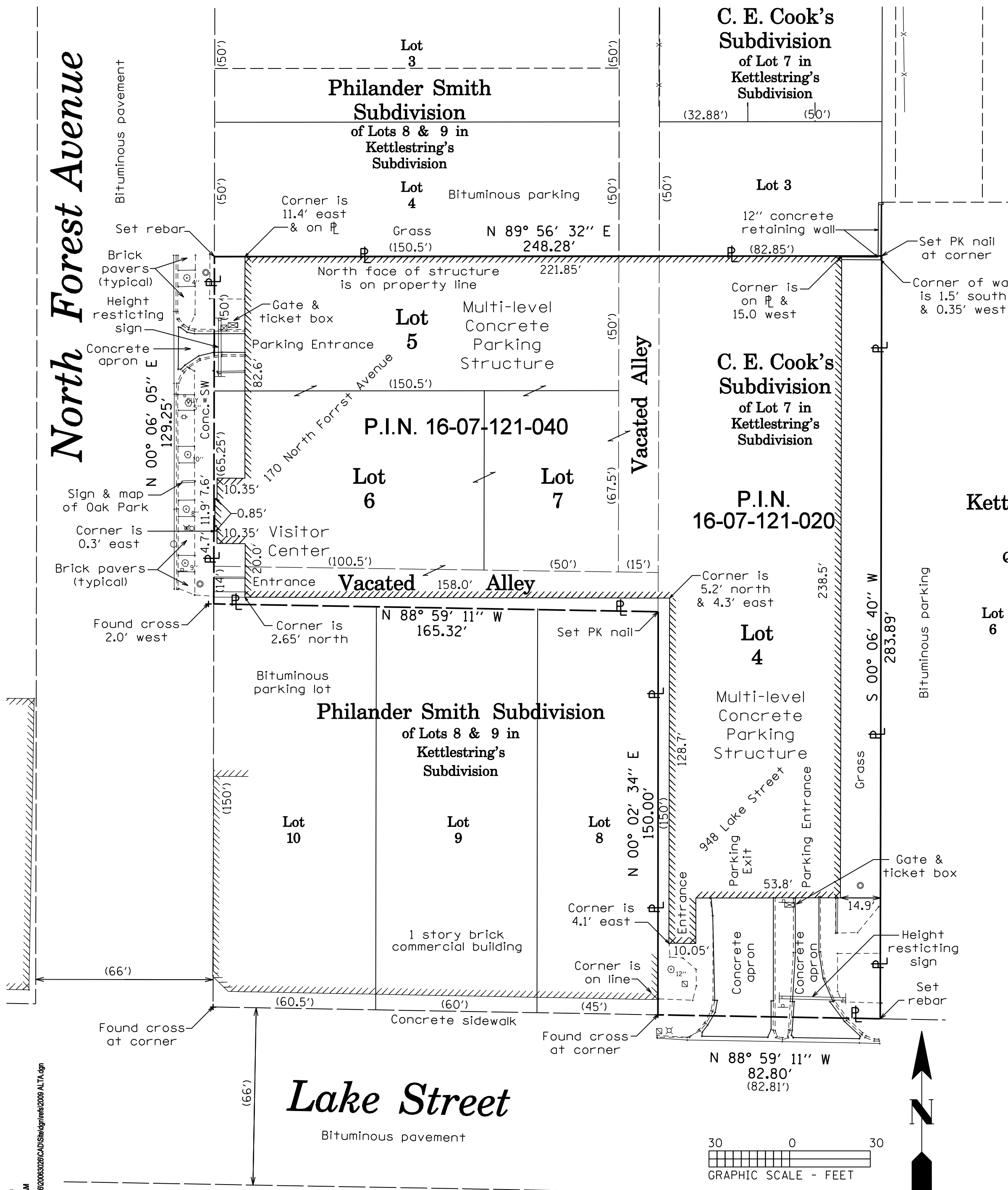
Four level parking structure
329 standard parking spaces
8 handicap parking spaces

To the Village of Oak Park:

This is to certify that this map or plat and survey on which it is based were made in accordance with the "Minimum Standard Detail Requirements for ALTA/ACSM Land Title Surveys," jointly established and adopted by ALTA and NSPS in 2005, and includes Items 1, 4, 7, 8, 9, and 10 of Table A thereof. Pursuant to the Accuracy Standards as adopted by ALTA and NSPS and in effect on the date of this certification undersigned further certifies that in my professional opinion, as a land surveyor registered in the State of Illinois, the Relative Positional Accuracy of this survey does not exceed that which is specified therein.

Date

William J. Fleming
Illinois Professional
Land Surveyor 35-3226
Expires 11/30/2010



3/10/2009 11:58:23 AM h:\jobs\2008\20080306\CAD\Site\plm\2009 ALTA.dgn