

# Oak Park Station

Downtown Oak Park Redevelopment Proposal



**AvalonBay**  
COMMUNITIES, INC.

  
**CLARK STREET**  
*Development*

# Revisions to Plan

originally presented March 10<sup>th</sup>, 2008

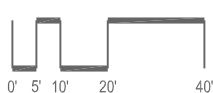
- Potential for additional retail space
- 169 new public spaces (over what exists today) will benefit downtown shoppers and merchants
- 196 residential units
- Decrease in the overall project budget
- Reduction in proposed rebate amount

**Oak Park Station**

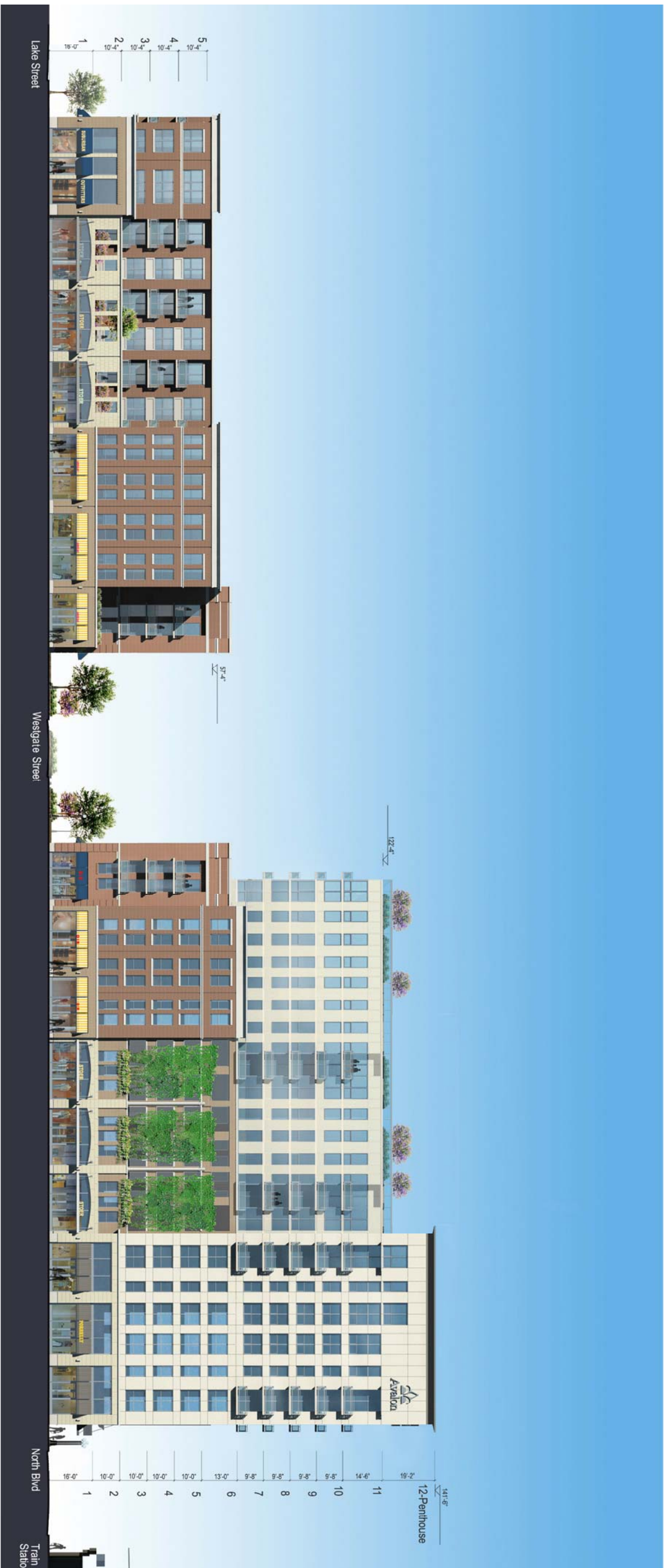
**Comparison of Project Information Presented to Village of Oak Park**

		<b>March 10, 2008</b>	<b>June 3, 2008</b>
North Building	Stories Height Type	5 57' 4" cast-in-place 1st floor, steel stud frame 2-5	2 31' 0" cast-in-place both floors
South Building	Stories Height Type	14 151' 2" cast-in-place	14 160' 10" precast
Apartments		268	196
Retail (SF)		34,800	66,915
Parking		496	496
<i>Residential</i>		344	245
<i>Public &amp; Retail</i>		152	251

[



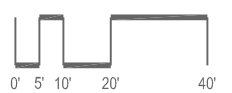
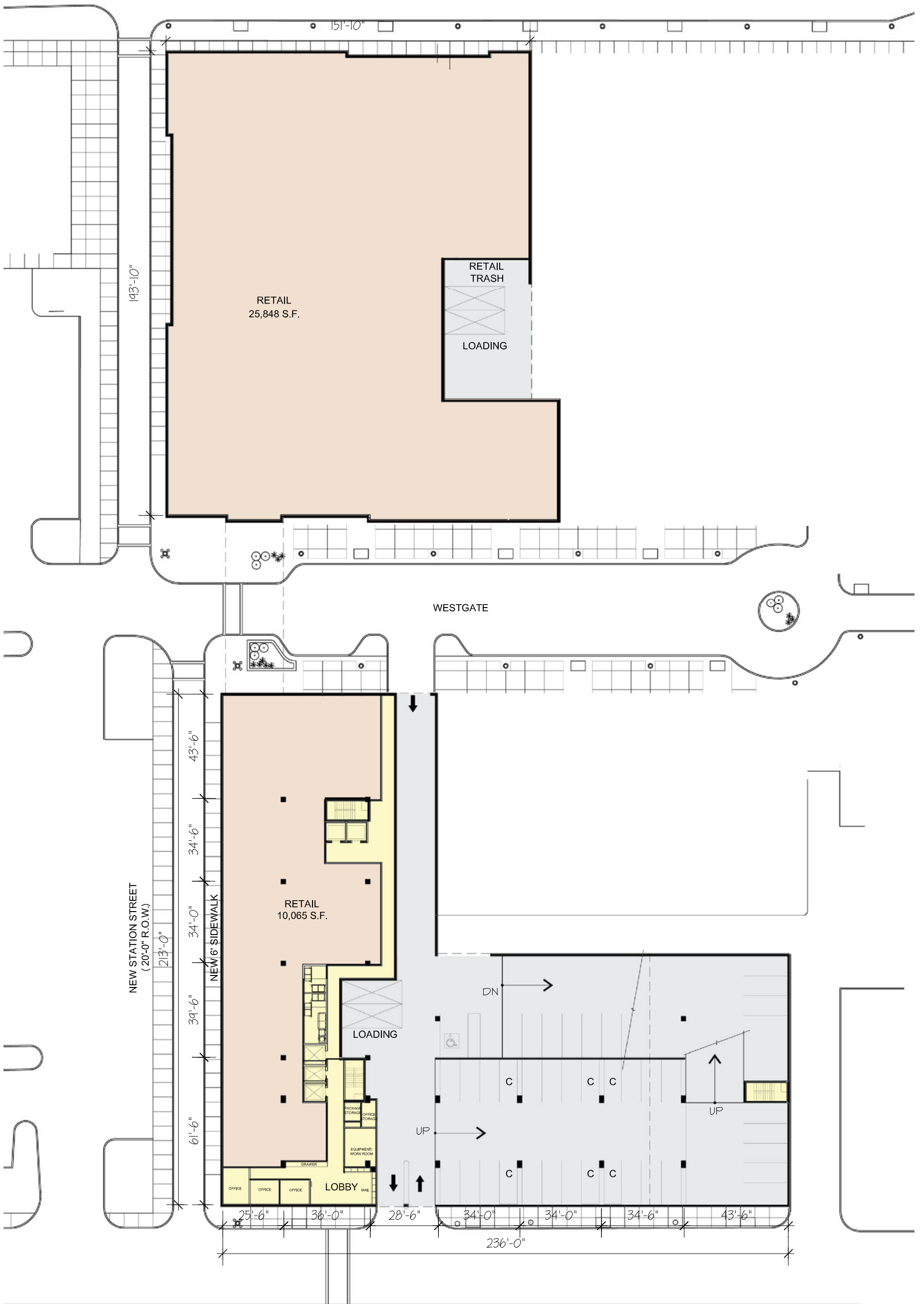
- Material Lable**
-  Prestcast Concrete
  -  Metal Panel
  -  Brick Color No.1
  -  White Stone
  -  Brick Color No.2
  -  Illumine
  -  Brick Color No.3

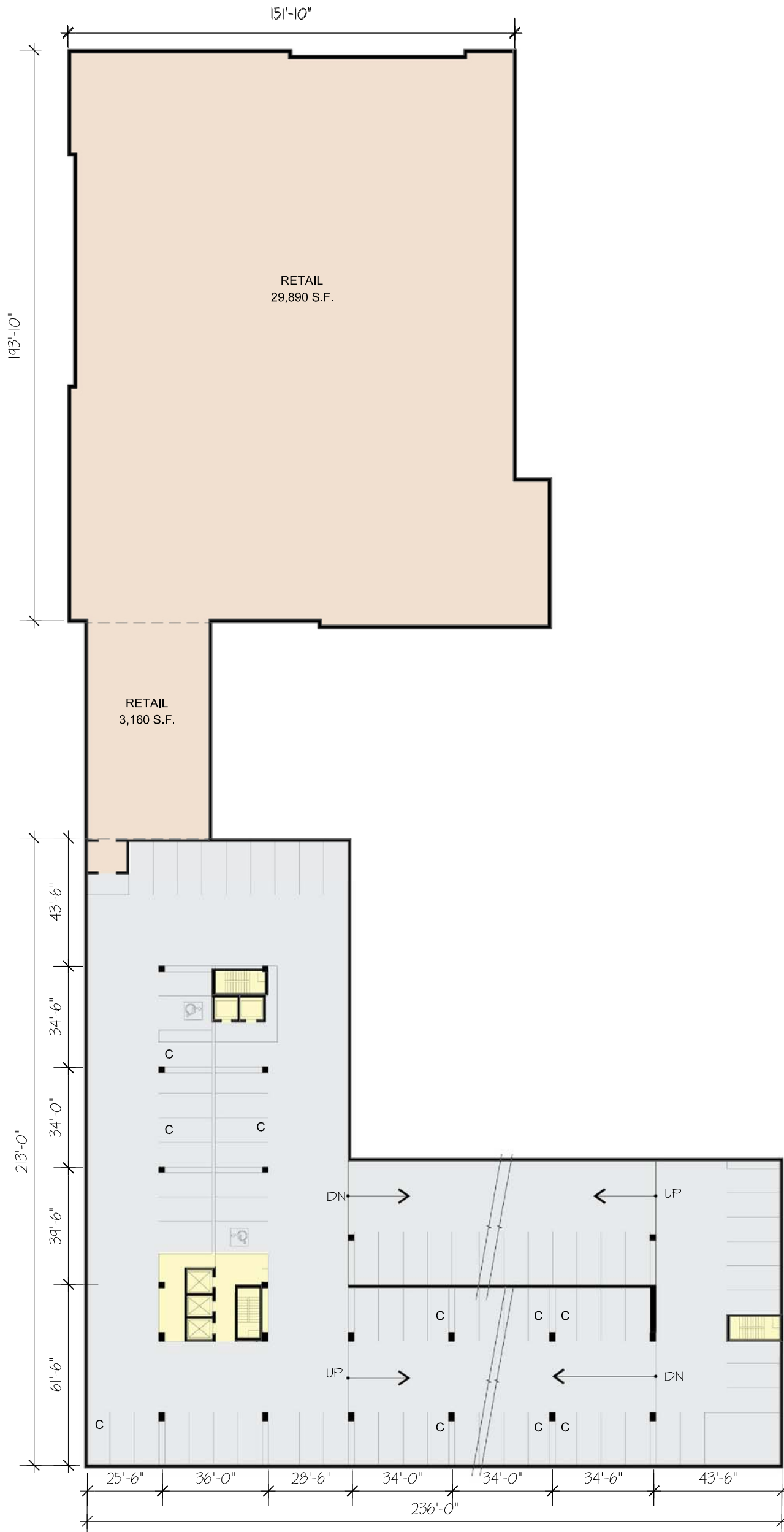


North Building

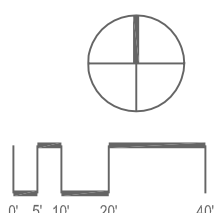
South Building

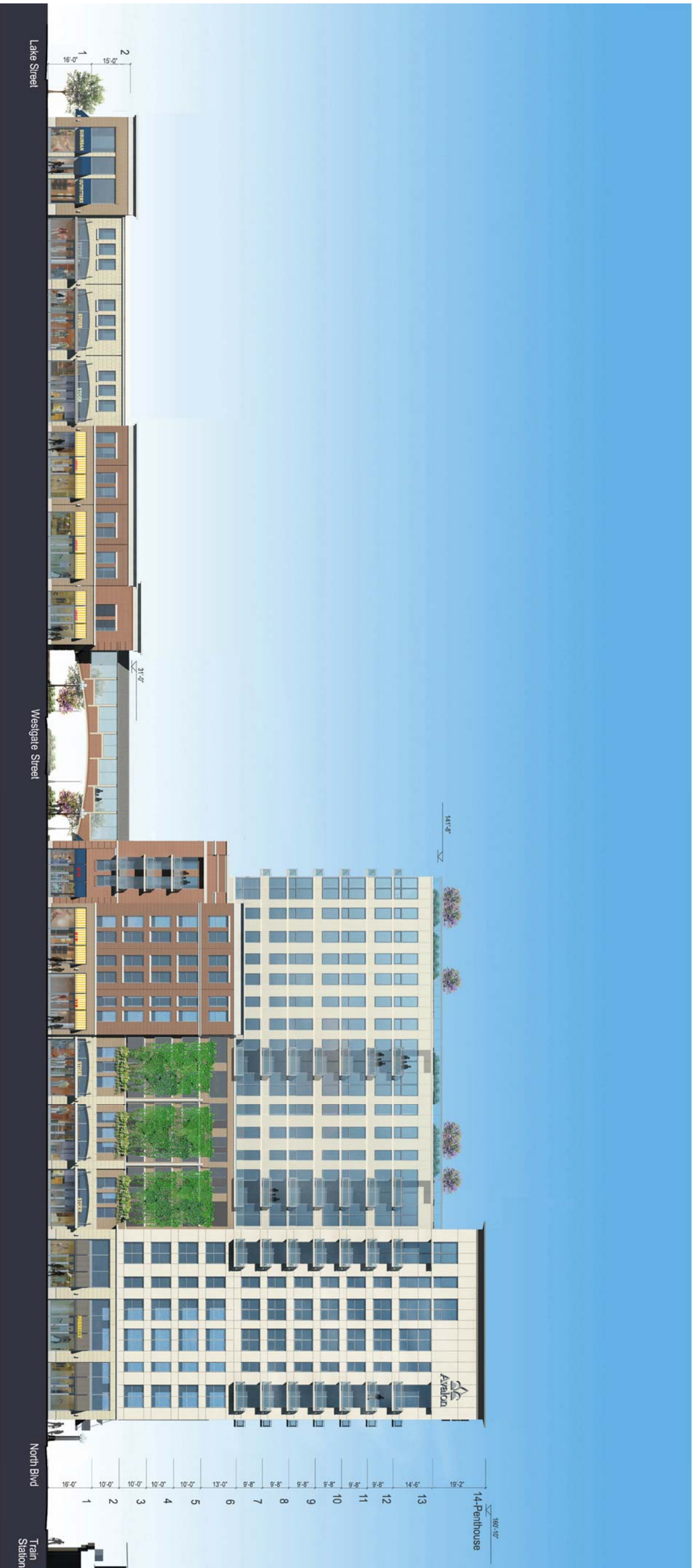






C: COMPACT PARKING SPCAE: 7'-3" MIN. NO MORE THAN 10% OF THE OVERALL PARKING SPCAE ACCORDING TO PARKING REQUIREMENT OF CITY OF OAK PARK  
REGULAR PARKING SPACE: 8'-3" PER OAK PARK PARKING CODE



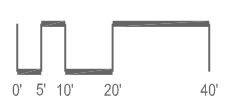


North Building

South Building

**Material Lable**

	Prestast Concrete		Metal Panel
	Brick Color No. 1		White Stone
	Brick Color No. 2		Illumine
	Brick Color No. 3		



OPTION 2: New Station Street Elevation