



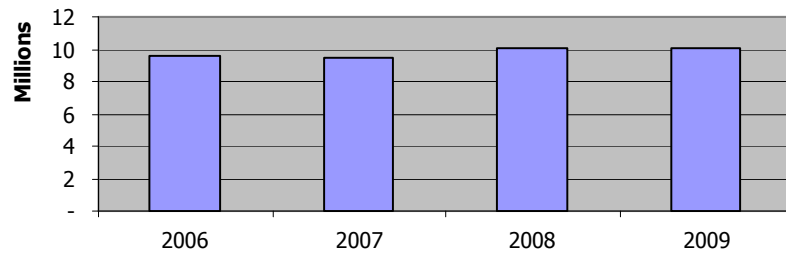
FY 2009 Budget Recommendations

October 2, 2008

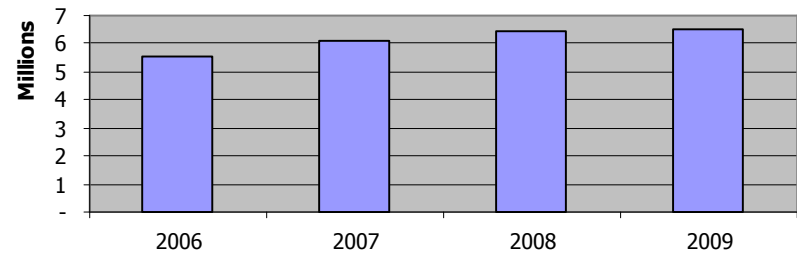


General Fund

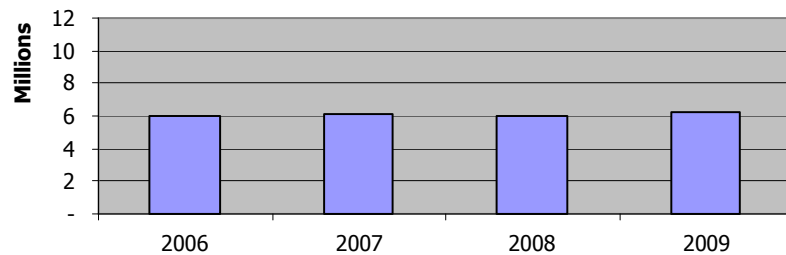
Property Taxes



Income Taxes



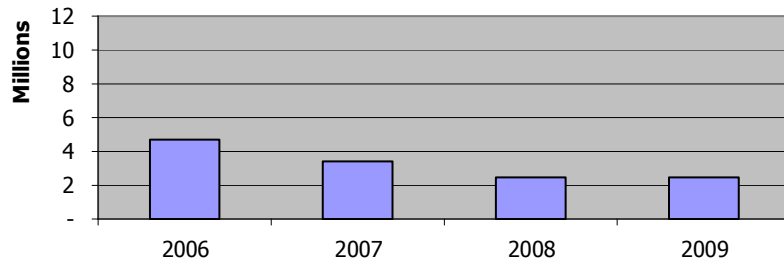
Sales Taxes



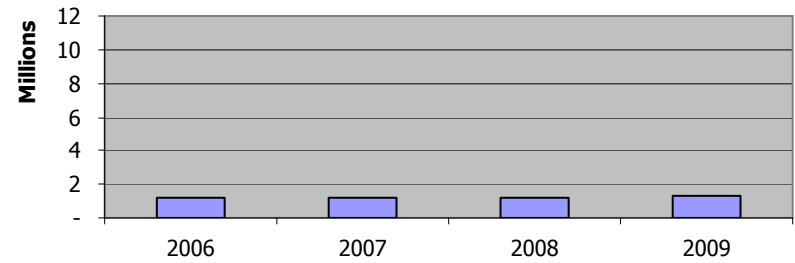


General Fund

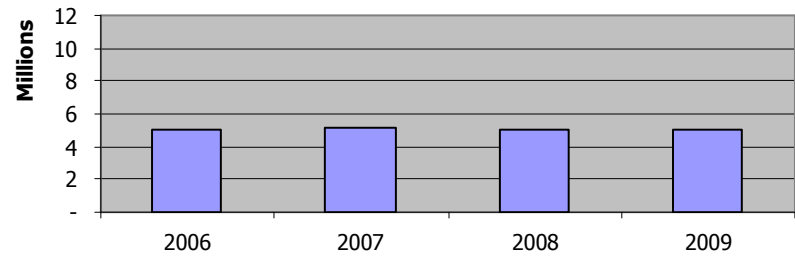
Real Estate Transfer Tax



Vehicle Tax

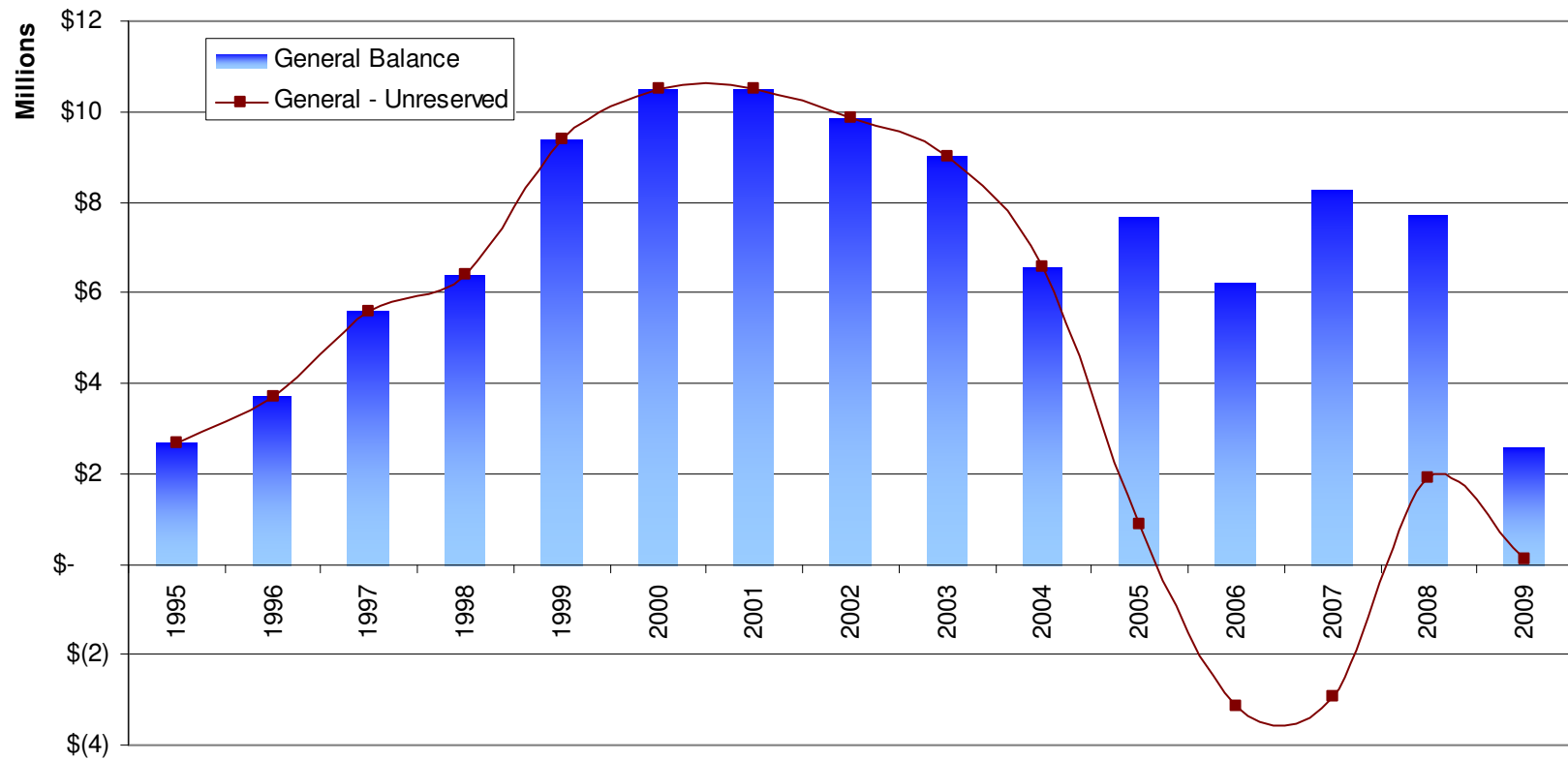


Utility Tax



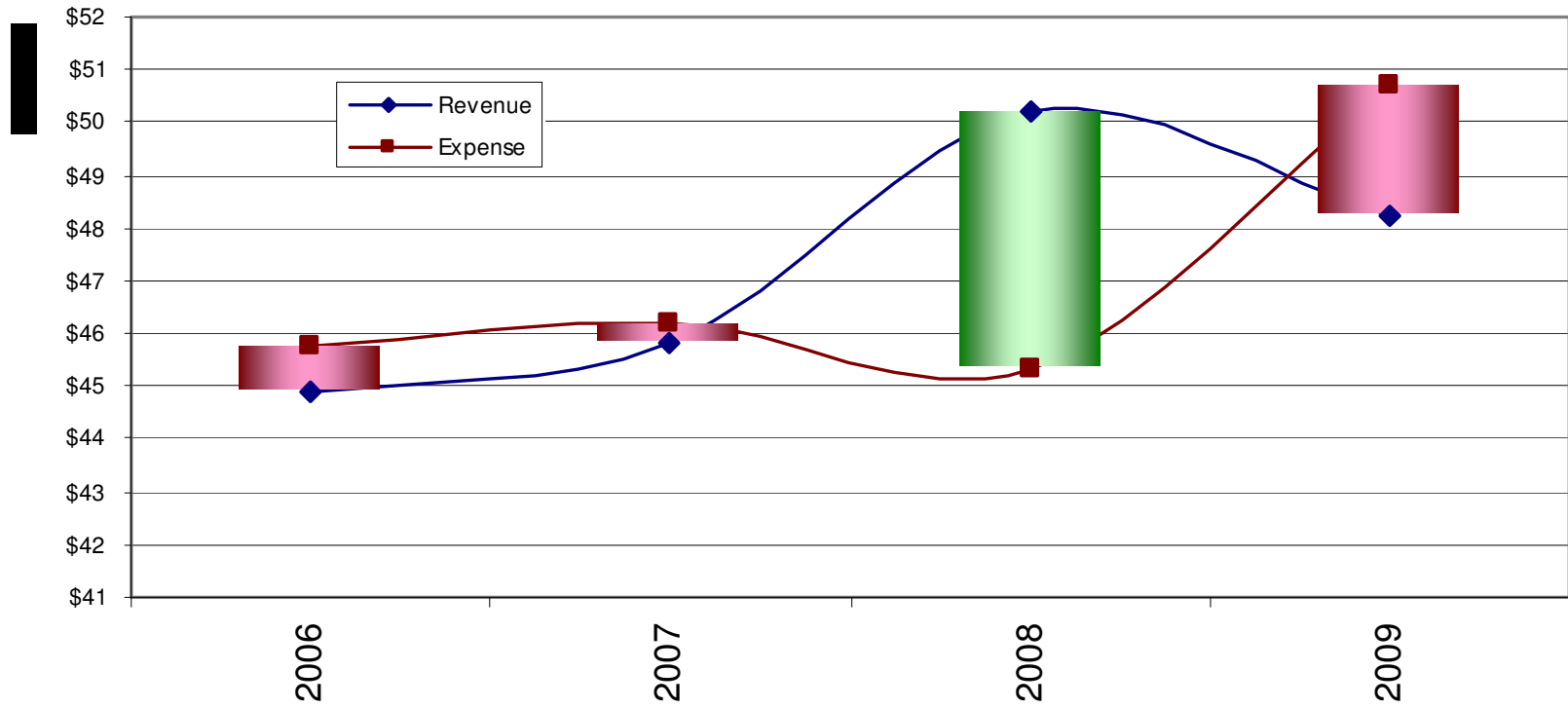


General Fund – Fund Balance History





General Fund – Rev. and Exp. History





General Fund – Projected Year End, 2008

<u>Fund balance at</u> <small>12/31/2007</small>	<u>\$(2.93 million)</u>
---	--------------------------------

FY 2008 Estimated

Total Revenue	\$ 44.8 million
Total Expense	<u>\$ 45.3</u>
Current Operating Deficit	\$ 0.5 million

<u>Fund balance</u> <small>estimated 12/31/2008</small>	<u>\$(3.43 million)</u>
--	--------------------------------

<u>Parking Loan Payback</u>	----- <u>\$5.4 million</u>
-----------------------------	-----------------------------------

<u>Adj. Fund balance</u> <small>estimated 12/31/2008</small>	<u>\$1.97 million</u>
---	------------------------------



General Fund – Projected Year End, 2009

<u>Fund balance</u> <small>12/31/2008</small>	<u>\$1.97 million</u>
--	------------------------------

FY 2009 Projected

Total Revenue \$ 48.9 million

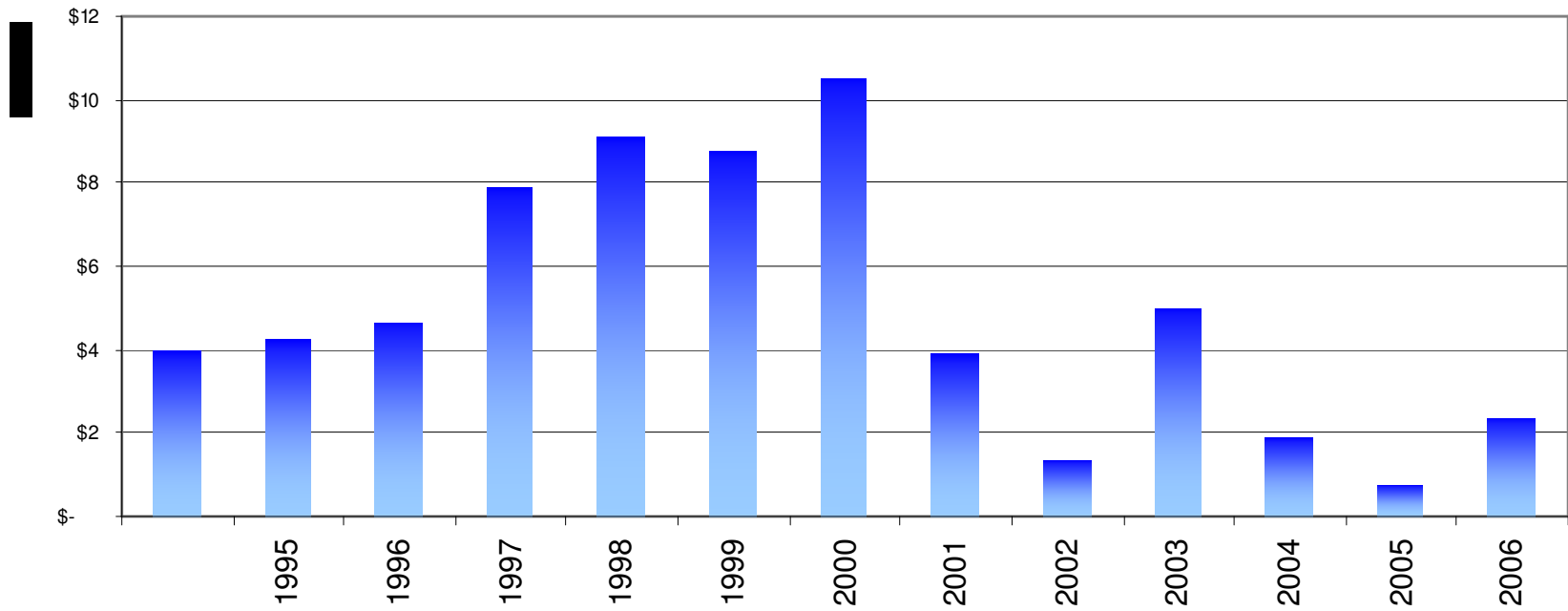
Total Expense \$ 50.7

Current Operating Deficit \$ 1.8 million

<u>Fund balance</u> <small>estimated 12/31/2009</small>	<u>\$0.17 million</u>
--	------------------------------



Water + Sewer Funds – Fund Balance History





Water + Sewer Funds - Projected Year End, 2008

Fund balance estimated 12/31/2007

\$2.3 million

FY 2008 Projected

Total Revenue \$10.6 million

Total Expense \$ 9.7

Current Operating Surplus \$ 0.9 million

Fund balance estimated 12/31/2008

\$3.2 million



Water + Sewer Funds - Projected Year End, 2009

Fund balance estimated 12/31/2008

\$3.2 million

FY 2009 Projected

Total Revenue \$11.0 million -- recommend 4% rate increase

Total Expense \$11.9

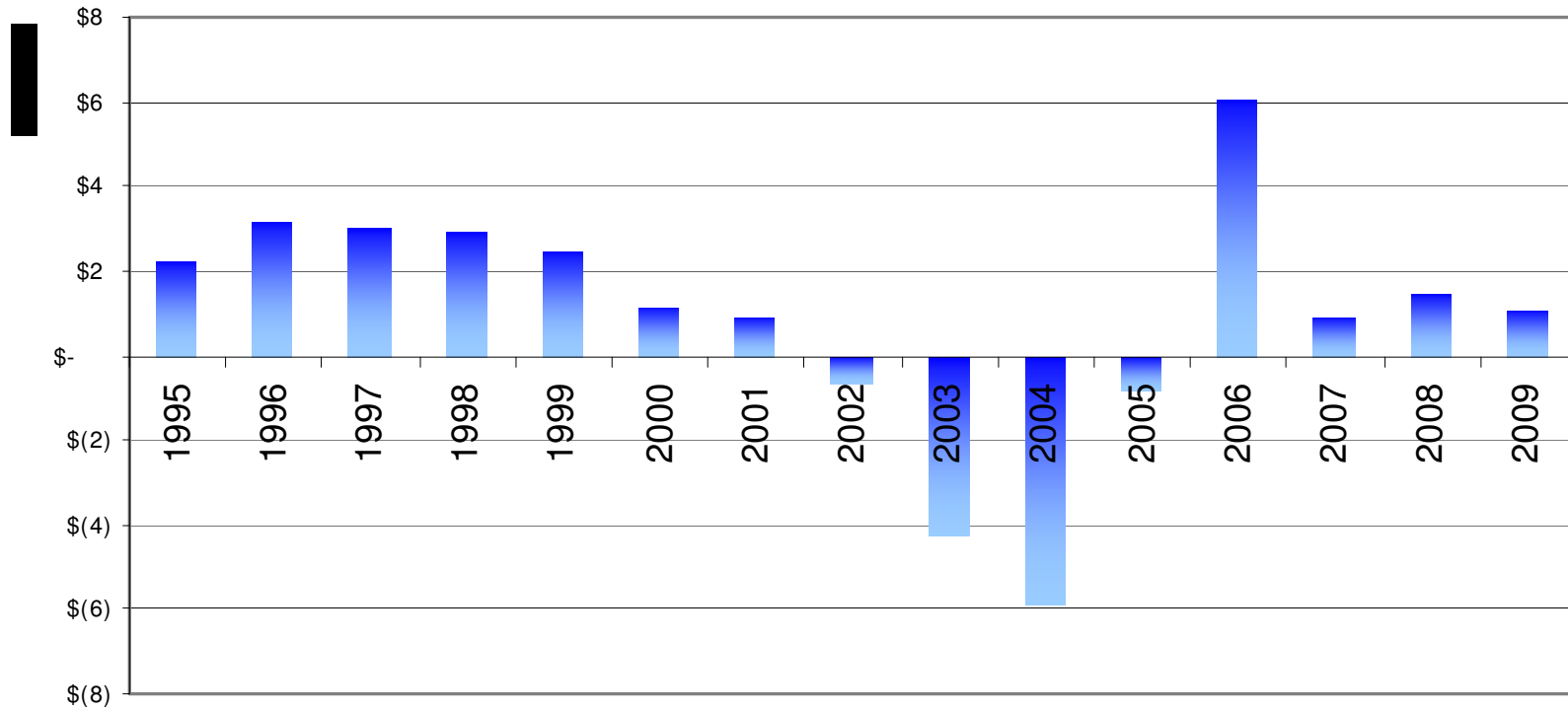
Current Operating Deficit \$ 0.9 million

Fund balance estimated 12/31/2009

\$2.3 million



Parking Fund – Fund Balance History





Parking Fund - Projected Year End, 2008

Fund balance estimated 12/31/2007

\$0.87 million

FY 2008 Projected

Total Revenue \$ 9.2 million

Total Expense \$ 8.7

Current Operating Surplus \$ 0.5 million

Fund balance estimated 12/31/2008

\$1.37 million



Parking Fund - Projected Year End, 2009

Fund balance estimated 12/31/2008

\$1.37 million

FY 2009 Projected

Total Revenue \$ 6.5 million

Total Expense \$ 6.9

Current Operating Deficit \$ 0.4 million

Fund balance estimated 12/31/2009

\$0.97 million



Parking Fund - Projected Year End, 2009

- Parking Fund **debt** to the General Fund

2006 = \$9,196,601

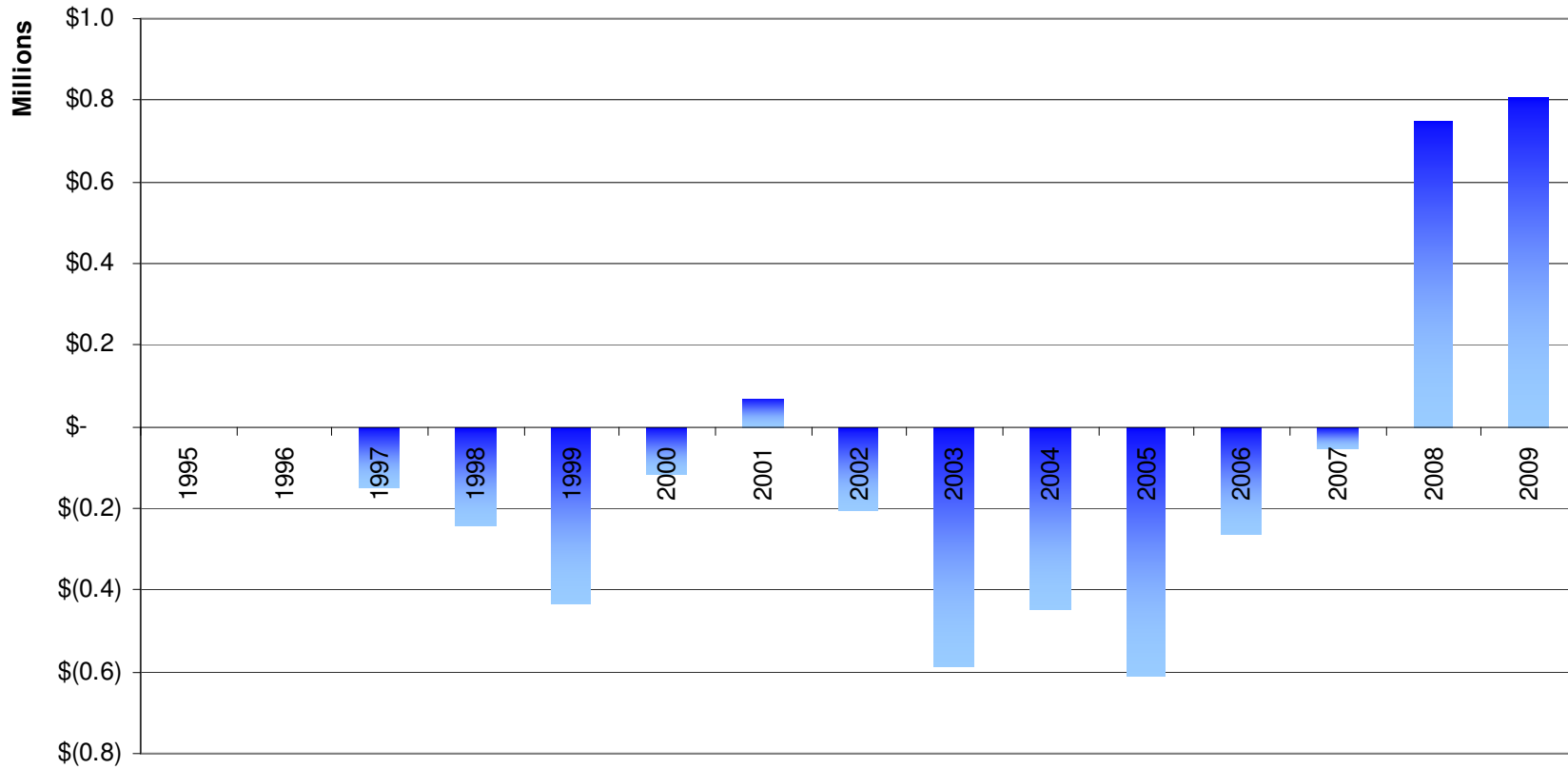
2007 = \$10,577,600

2008 = \$5,177,600

2009 = \$2,477,600



Solid Waste – Fund Balance History





Solid Waste Fund - Projected Year End, 2008

Fund balance estimated 12/31/2007

\$(51,000)

FY 2008 Projected

Total Revenue \$ 3.1 million

Total Expense \$ 2.3

Current Operating Surplus \$ 0.8 million

Fund balance estimated 12/31/2008

\$750,000



Solid Waste Fund - Projected Year End, 2009

Fund balance estimated 12/31/2008

\$750,000

FY 2009 Projected

Total Revenue \$ 3.2 million -- recommend 4% rate increase

Total Expense \$ 3.1

Current Operating Surplus \$ 0.1 million

Fund balance estimated 12/31/2009

\$850,000



Some Department Highlights

- Police
 - Fill current vacancies
- Fire
 - Reorganization saves \$450,000 with no impact to services
- Parking
 - Tracks individual garage revenues and expenses
 - Moving to build garages with private partnerships
 - Leveraging technology to improve customer service and improve control
- Public Works
 - Increase budgets from 2008 for streets, alleys and sidewalks
 - Meter program to remove malfunctioning meters at a quicker pace
 - Allows for leak detection to reduce individual bills and maximize pump-to-bill ratio



Capital items

- Streets - \$2.7 million
- Alleys - \$1.0 million
- Sidewalks - \$0.3 million
- Major Projects
 - Roosevelt Rd. engineering \$0.25 million
 - All other major projects are to debt-financed as needed



Housing Bond, 2008-2009

- **Annual need \$1.6 million**
- **Potential earmarking of certain revenue could generate \$800,000 annually**
- **Issue short-term debt, backed by on-going revenue**
- **Question: How many years of funding?**



Budget Schedule

- **Public Works / Capital**
- **Parking Services**
- **Public Safety**
 - Police, Fire, Emergency Mgmt.
- **Partner Agencies**
- **Economic Development**
 - Planning, Business Srv., Developer Srv.
- **Others?**