

Barrie Park Restoration

Restoration of Barrie Park will start phasing in before remediation of the site is completed. The Utilities' current project schedule estimates that environmental remediation of the park and adjacent properties will be completed in Fall 2003. A phased restoration of the park will commence in the south end of the park during Fall 2003 as remediation concludes. Rededication of Barrie Park is anticipated for Fall 2004 after all restoration work is completed and the park is ready for play. Restoration costs will be paid by the Utilities.

The landscape architectural firm of Davis & Associates, Ltd., has designed the new Barrie Park to incorporate as many of the community's suggestions as feasible within the 3.5-acre park. During the Fall of 2000, the Park District of Oak Park held public forums and several additional meetings at which participants shared their ideas and completed surveys on the redevelopment of Barrie Park. Approximately 300 surveys were collected and evaluated.

Qualifications of Davis & Associates, Ltd.

Davis and Associates, Ltd., has extensive experience in park and sports facility planning. The firm has completed over 125 parks throughout the Metropolitan Area with over 80 of these parks being designed and constructed within the last 10 years. This firm is very familiar to the Oak Park area, having worked on numerous parks in the vicinity such as Maple, Stevenson, Ridgeland Common, Taylor, and the original design for Barrie Park. Davis & Associates' park designs and equipment selections are known to stand the test of time; they "age and wear well." Davis and Associates' responsibilities in the Barrie Park Redevelopment include planning and design development, preparation of construction documents, and observation of construction.

Design Criteria

The design criteria used for the redevelopment of Barrie Park include safety, accessibility, community input, variety, social development, flow, participation, physical challenge and development, budget, imaginative play, and aesthetic quality. The National Recreation and Park Association Standards on acreage recommended for baseball and soccer fields, open space, and play apparatus areas were also implemented.

Please refer to the drawing on the next page for a description of the park features.

Features of the 3.5-acre Park

Park Entrances – Brick entryways at the northwest and southeast corners will welcome visitors to Barrie Park. New lighting will be installed at both entrances. Two flagpoles will be installed at the northwest entrance.

Sled Hill – The sled hill, one of the more popular features of the park according to the resident survey, will remain in its current location. This optimizes solar orientation to retain snow cover on the hillside as long as possible. The hill will be redesigned to control the direction of sledding and allow for a longer run. Stairs will allow easy access to the hilltop. New lighting will also be installed.

Landscape Areas – The new landscaping will include earth landforms, shade trees, ornamental trees, evergreen trees, shrubs, flowers, and ground cover. Park benches and waste receptacles will be placed throughout the park. The park will be irrigated to provide quality turf conditions.

Perimeter Walkway – A lighted pedestrian walkway will meander through the beautiful landscaping around the park.

Creative Play Area – The playground will be relocated to the southeast corner of the park to make it more accessible to the neighborhood and to protect the play area from stray balls from the baseball field. Surrounded by sitting areas and landscaping, the play area will contain a variety of activities, accessible wood chip surfacing and some synthetic rubber surfacing, and a drinking fountain.

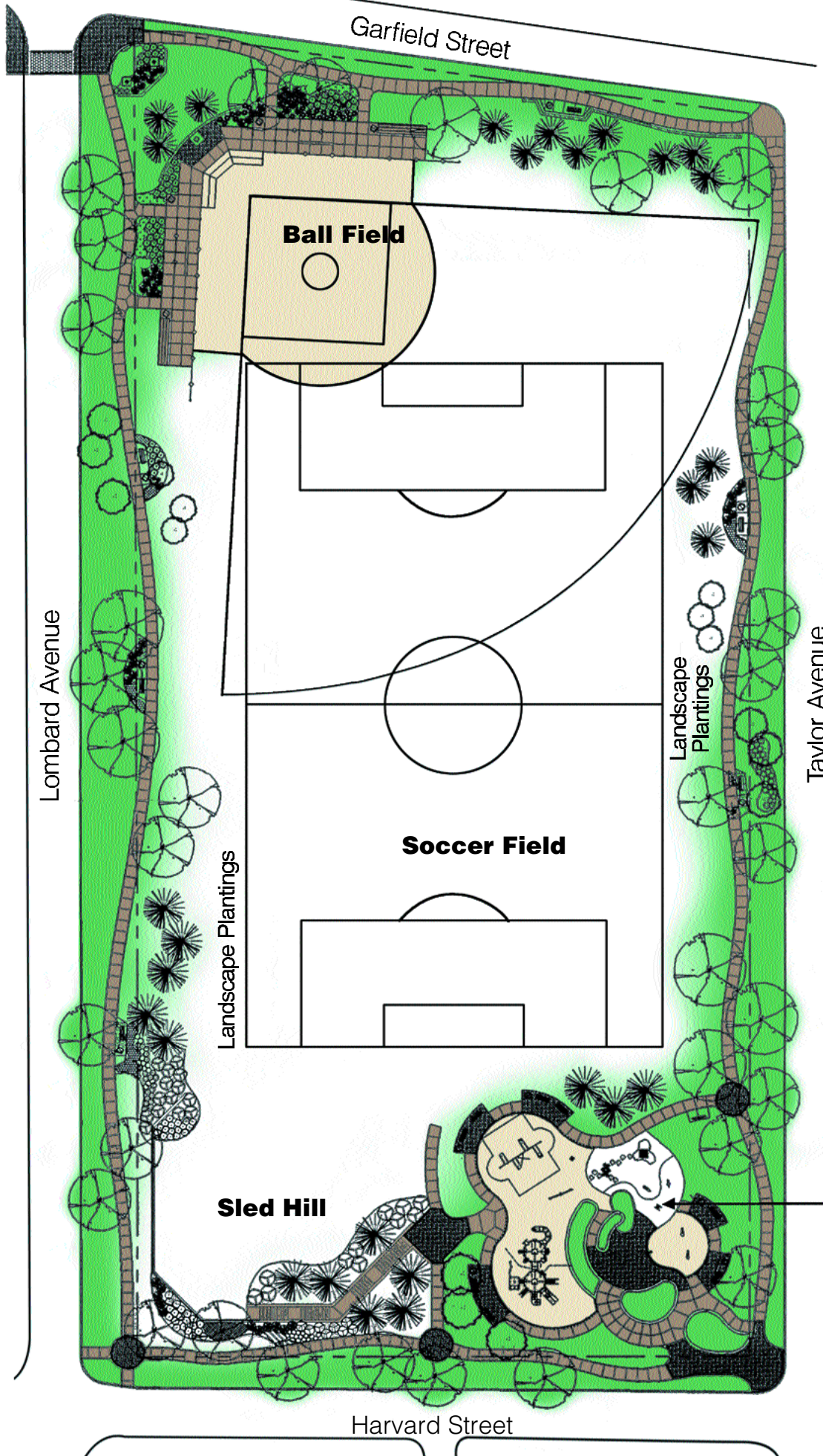
Baseball Field – A single baseball diamond will be located in the northwest corner of the park. The ballfield will include a backstop, concrete surfacing, protective fencing, player benches, litter receptacles, spectator bleachers, clay infield mix, and a nearby drinking fountain.

Soccer Field – A single soccer field, large enough for junior high to adult play, will be located in the middle of the park. The field will be supplied with goals and spectator benches.

Bike Parking – Bike parking will be located at the Baseball Field and the Creative Play Area.

For more information on park restoration, contact Gary Balling, Park District Executive Director, at 708-725-2020.

Barrie Park Restoration



Features

Park Entrances

- Brick entryways and new lighting at the northwest and southeast corners
- Two flagpoles at northwest entrance

Sled Hill

- Location: southwest corner
- Redesigned to control sledding direction and allow a longer run

Landscape Areas

- Earth landforms
- Shade trees, ornamental trees, evergreen trees, shrubs, flowers, and ground cover
- Park benches and waste receptacles
- Park irrigation for quality turf conditions.

Perimeter Walkway

- A lighted pedestrian walkway will meander through the entire park perimeter

Creative Play Area

- Location: southeast corner
- Creative play activities and a drinking fountain
- Surrounded by sitting areas and landscaping

Baseball Field

- Location: northwest corner
- Will include a diamond, backstop, protective fencing, clay infield mix, player benches and spectator bleachers on concrete surfacing, litter receptacles, nearby drinking fountain

Soccer Field

- A single field centrally located
- Will include goals and spectator benches

Bike Parking

- Located at the Baseball Field and Creative Play Area

Expected completion:

Fall, 2004

Creative Play Area

